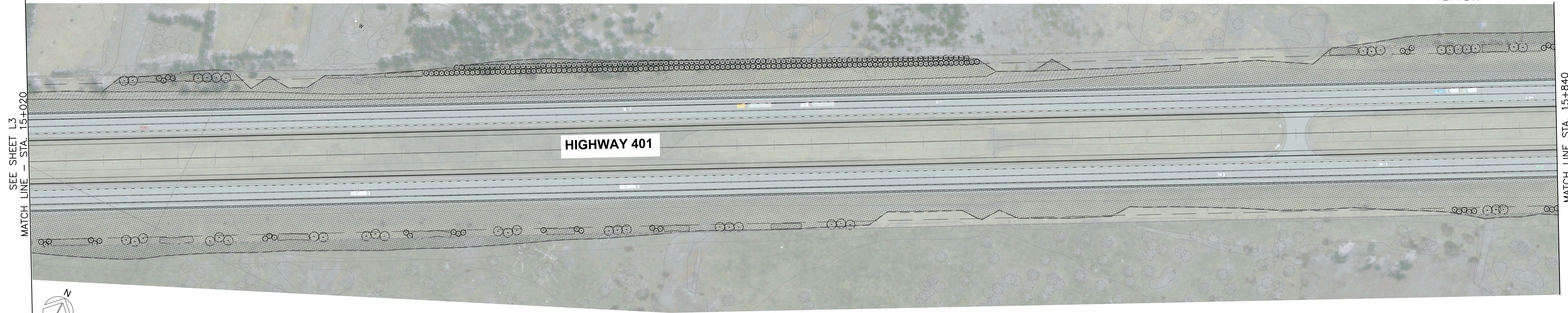
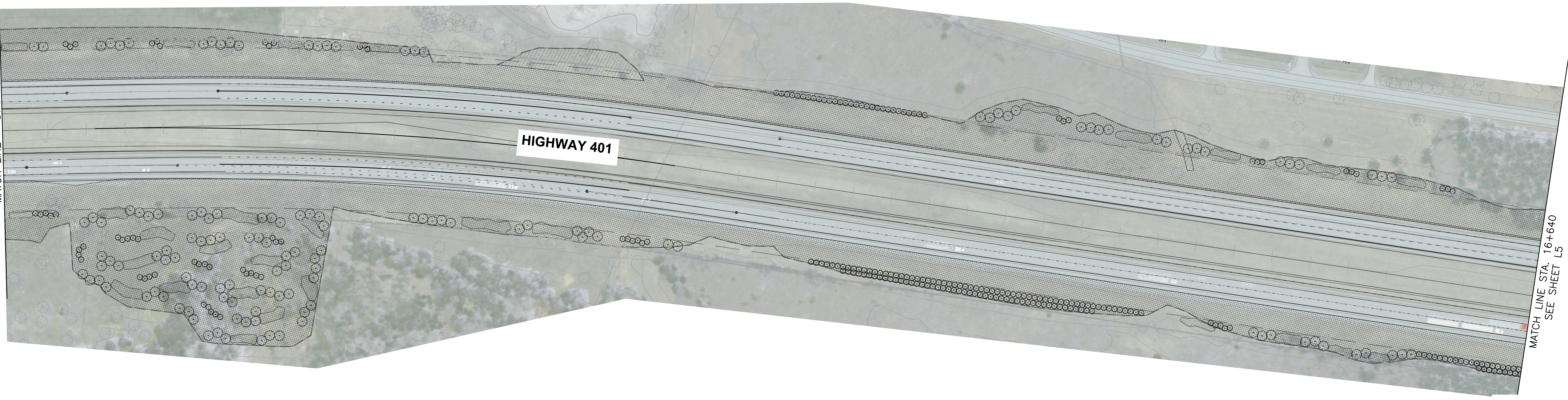


KEY PLAN



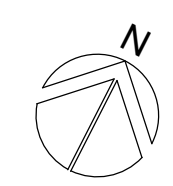
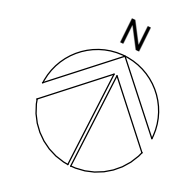
SEE SHEET L3
MATCH LINE - STA. 15+020

MATCH LINE STA. 15+840
SEE BELOW



SEE ABOVE
MATCH LINE - STA. 15+840

MATCH LINE STA. 16+640
SEE SHEET L5

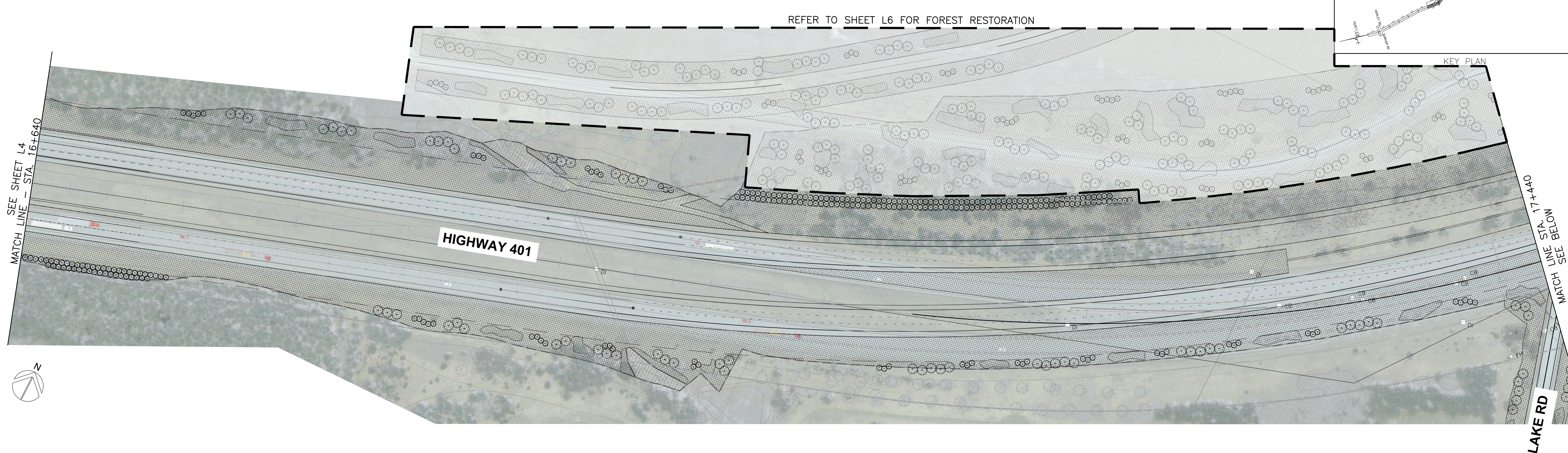
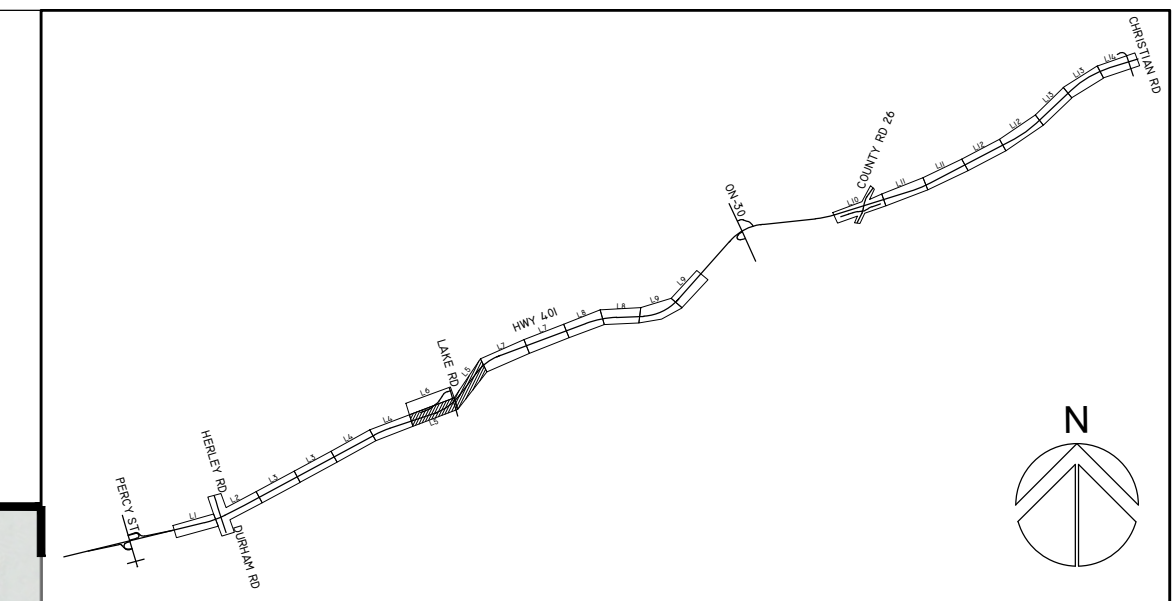


LEGEND

	PROPOSED DECIDUOUS TREE		CUT / FILL
	PROPOSED CONIFEROUS TREE		6M OFFSET FROM THE CUT / FILL
	PROPOSED SHRUB		RIGHT OF WAY
	PROPOSED SEED TYPE #1: MTO STANDARD ROADSIDE SEED MIX		15M PLANTING OFFSET
	PROPOSED SEED TYPE #2: WET MEADOW MARSH SEED MIX		

<table border="1"> <tr> <th>NO</th> <th>DATE</th> <th>BY</th> <th>REVISIONS</th> <th>MAINT. CAD</th> </tr> <tr> <td>1</td> <td>15/09/2023</td> <td>K.L.</td> <td>FOR SUBMISSION</td> <td></td> </tr> <tr> <td>Design</td> <td>K.L.</td> <td>CH/td</td> <td>DATE</td> <td>FEBRUARY 2023</td> </tr> <tr> <td>Drawn</td> <td>K.L.</td> <td>CH/td</td> <td></td> <td></td> </tr> </table>		NO	DATE	BY	REVISIONS	MAINT. CAD	1	15/09/2023	K.L.	FOR SUBMISSION		Design	K.L.	CH/td	DATE	FEBRUARY 2023	Drawn	K.L.	CH/td			<table border="1"> <tr> <th colspan="2">APPROVALS</th> </tr> <tr> <td>Municipal</td> <td></td> </tr> <tr> <td>Regional</td> <td></td> </tr> <tr> <td>Director, Engineering Services</td> <td></td> </tr> <tr> <td>Manager, Design Services</td> <td></td> </tr> </table>	APPROVALS		Municipal		Regional		Director, Engineering Services		Manager, Design Services		<p>wsp</p>	<p>TITLE HWY 401 - COLBORNE TO BRIGHTON LANDSCAPE DESIGN</p>
NO	DATE	BY	REVISIONS	MAINT. CAD																														
1	15/09/2023	K.L.	FOR SUBMISSION																															
Design	K.L.	CH/td	DATE	FEBRUARY 2023																														
Drawn	K.L.	CH/td																																
APPROVALS																																		
Municipal																																		
Regional																																		
Director, Engineering Services																																		
Manager, Design Services																																		
<p>Contractor File NO</p>	<p>Regional Drawing NO</p>																																	
<p>CONTRACT NO 17M-01712-11</p>	<p>Drawing NO SHEET 4 of L14</p>																																	

P:\17M-01712-11\17M-01712-11 - Technical Services\17M-01712-11 - Landscape\17M-01712-11 - Colborne to Brighton.dwg
 © 2023 WSP | P:\17M-01712-11\17M-01712-11 - Technical Services\17M-01712-11 - Landscape\17M-01712-11 - Colborne to Brighton.dwg



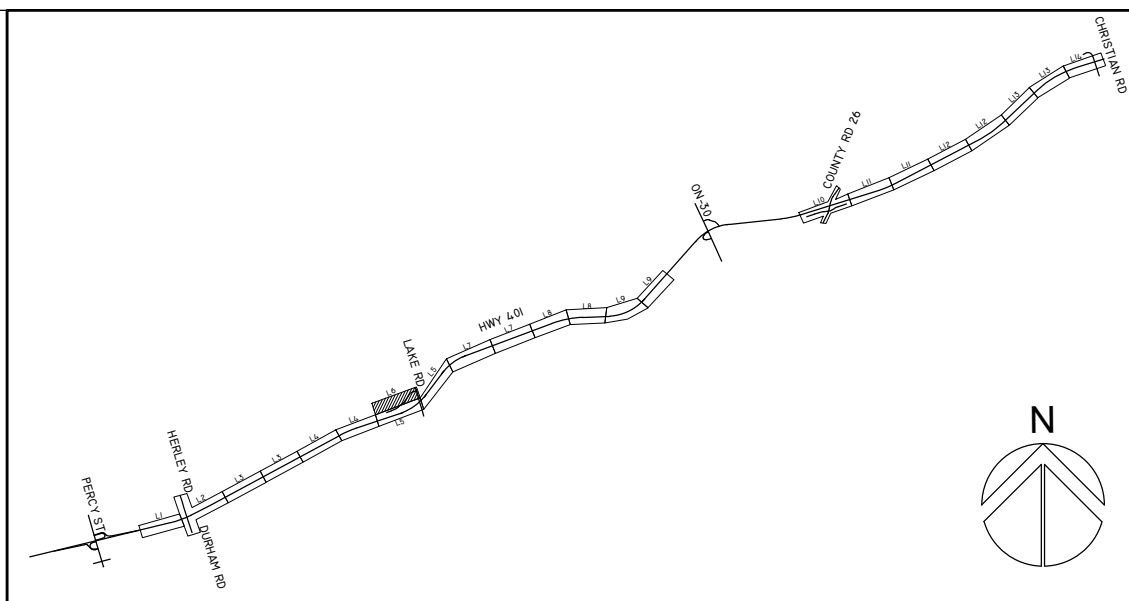
- PROPOSED DECIDUOUS TREE
- PROPOSED CONIFEROUS TREE
- ▨ PROPOSED SHRUB
- ▩ PROPOSED SEED TYPE #1: MTO STANDARD ROADSIDE SEED MIX
- ▩ PROPOSED SEED TYPE #2: WET MEADOW MARSH SEED MIX
- CUT / FILL
- 6M OFFSET FROM THE CUT / FILL
- RIGHT OF WAY
- 15M PLANTING OFFSET

NO.	DATE	BY	REVISIONS	MANUAL CAD
1	15/09/2023	K.L.	SUBMISSION	
Design		K.L.	CH.ktd	February 2023
Drawn		K.L.	CH.ktd	

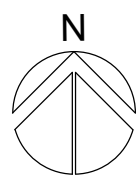
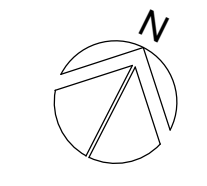
APPROVALS	
Municipal	Stamp
Regional	Stamp
Director, Engineering Services	
Manager, Design Services	

TITLE	
HWY 401 - COLBORNE TO BRIGHTON LANDSCAPE DESIGN	
Consultant File NO	Regional Drawing NO
CONTRACT NO	Drawing NO
17M-01712-11	sheet L5 of L14

Z:\FILE LOCATION\401 Main\01-17-2023\17-01712-11 - Technical\Sheet\11_Landscape\17-01712-11_Landscape.dwg
DATE PLOTTED: 07/17/2023 7:55:00 PM BY: 33055855




KEY PLAN



P:\FILE LOCATION AND NAME: C:\Users\jsherman\OneDrive\Work\17M-01712-11 - Technical Services\17M-01712-11 - Technical Services\17M-01712-11 - Landscape\17M-01712-11 - Landscape\17M-01712-11 - Landscape\17M-01712-11 - Landscape.dwg
 © 1975-2023, WSP | Parsons | 17M-01712-11

Revisions							Stamp		APPROVALS		TITLE	
NO.	DATE	BY	REVISIONS	DATE	NO.	DATE	Stamp	Municipal	Regional	Consultant File NO.	Regional Drawing NO.	
1	15/09/2023	K.L.	ISSUE FOR SUBMISSION									
Design		K.L.	CH/ML			FEBRUARY 2023						
Drawn		K.L.	CH/ML									
References												

		TITLE HWY 401 - COLBORNE TO BRIGHTON LANDSCAPE DESIGN	
		Consultant File NO.	Regional Drawing NO.
		CONTRACT NO. 17M-01712-11	Drawing NO. SHEET L6 of L14
		Director, Engineering Services	Manager, Design Services